

# The FRIEND

GENACROSS LUTHERAN SERVICES



VOLUME CVV No. 1 WINTER 2020

## GENACROSS SIGNS LETTER OF INTENT WITH BENEDICTINE

Genacross Lutheran Services and Benedictine, a nationally recognized senior care ministry based in Minnesota, have announced the signing of a letter of intent for Genacross to potentially join Benedictine.

In the wake of this February 4 announcement, senior leaders from Benedictine – President/CEO Jerry Carley, Senior Vice President, Operations/Chief Operating Officer Steven Przybilla, and Director of Organizational Learning Laura Campbell – visited Toledo on February 17-18 to tour Genacross facilities and meet with employees.

At a gathering of Genacross leaders, Mr. Carley provided an overview of Benedictine ministries and explained his organization's perspective on the proposed transaction. The Benedictine leadership also spent a substantial amount of time answering questions.

During his presentation, Mr. Carley specifically highlighted that the transaction will include the entire Genacross business and will honor the Genacross brand and its Lutheran identity. He also spoke about a commitment to the retention of employees and to capital spending at Genacross ministries, as well as the expansion of Family & Youth Services, and the continuation of service coordination in low-income housing.

"This was never a one-way discussion," Mr. Carley stated. "Both organizations can help each other moving forward."



*Benedictine President/CEO Jerry Carley met with Genacross leaders on February 18 in the sanctuary of First St. John Lutheran Church, which has maintained strong ties with Genacross over the years.*

"While Genacross is in a stable financial position now, the organization had a duty to proactively look to the future to make sure it remains strong and is able to continue meeting the needs of individuals," said Genacross President/CEO Rick Marshall, who also spoke during the meeting.

"We started the process about a year ago, when a board-level Strategic Options Committee was created," Mr. Marshall explained. "Fairly quickly, we realized that

*continued on page 3*



Genacross Lutheran Services is celebrating 160 years of service. Each issue of *The Friend* in 2020 will have a special center section where we will share historic facts, stories and photos.

## IN THIS ISSUE

- CEO Column, page 2
- Core Values, page 3
- Youth Services, page 4
- Housing, page 5
- Napoleon Campus, page 5

- 160th Anniversary, pages 6-7
- Toledo Campus, page 8
- Wolf Creek Campus, page 8
- Foundation, page 9
- Donations, pages 9-11

## OUR MISSION

Inspired by the Christian faith, we embrace individuals and families with compassionate care and services throughout life's journey.

## OUR VISION

Through our faith and work, we strive to be a forward-thinking, compassionate organization that improves the lives of current and future generations.

## OUR VALUES

Faithfulness to Christ

Equality and Justice

Wholeness of Life

Integrity

Quality of Service

Stewardship of Resources

## OUR MINISTRIES

**Genacross Lutheran Services**  
*Napoleon Campus*

**Genacross Lutheran Services**  
*Toledo Campus*

**Genacross Lutheran Services**  
*Wolf Creek Campus*

**Genacross Housing &  
Community Services**

**Genacross Adult Day Center**

**Genacross at Home**

**Genacross Family &  
Youth Services**

**Genacross Lutheran Services  
Foundation**

Connect on Social Media:



A note from

# RICK MARSHALL

*President and CEO*



## Ensuring a Vibrant Future

Recently, Genacross Lutheran Services announced that we have signed a letter of intent to join with Benedictine. It is natural to ask the question: Why, after 160 years, would Genacross pursue a relationship with another organization? The answer is that the Genacross Board of Directors and Leadership Team felt the affiliation prudent to ensure a vibrant future for our ministry.

Genacross is in a stable financial position. However, the health care industry in which we operate is changing dynamically and quickly. To meet the needs and desires of an aging population, Genacross must reposition our continuing care campuses to provide more independent living with services that allow individuals to age in place. In addition, we need to update our assisted living offerings and provide new facilities for individuals with memory care needs. On our own, we do not have the resources available to reposition our campuses to meet these future needs.

Our Family & Youth Services ministry provides life-enriching services to at-risk youth in a program that is at capacity. There is tremendous potential to expand our residential services and impact more youth and their families. In order to grow our services in Ohio, Michigan, and other states, we need additional funding over what we are currently able to obtain.

In our dynamically changing environment, there are many opportunities for expansion of services. However, it is becoming increasingly difficult for mid-sized organizations such as Genacross to seize these opportunities. Through partnering with a larger organization, we obtain the scale that allows us to grow and ensure a non-profit, faith-based presence in our region.

The Board's choice of Benedictine followed a national search. As a non-profit, faith-based provider of senior services, Benedictine has a mission and values that clearly align with ours. As a larger, financially strong organization, they bring the needed resources to reposition our current offerings and set the stage for future growth. Benedictine also is respectful of our Lutheran heritage and is committed to the retention of our relationships with our Lutheran congregations and such affiliations as Lutheran Services in America.

Genacross has embraced change over its 160-year history. Our Board of Directors recognizes a need to continue to embrace change that will allow Genacross to continue to serve others for many years to come.

Blessings,



## YEAR FOCUSES ON FAITHFULNESS TO CHRIST CORE VALUE

**During 2020**, Genacross Lutheran Services is lifting up the first of its six Core Values: "Faithfulness to Christ." Almost all businesses these days have defined values. At their best, they give an organization a clear sense of direction in decision-making. Values can also help shape an organization's culture.

When values and day-to-day operations are in alignment, the organization operates more efficiently and with a strong purpose.

"It is this first Core Value though, that specifically sets Genacross apart as a faith-based organization, declaring that our mission and the way we carry out all that we do flow from the person and ministry of Jesus Christ," stated Dr. Jim Dumke, Vice President for Mission Integration.

The Faithfulness to Christ value means that the way Genacross seeks to care for the elderly and youth, as well as the generations in between, is by looking to Christ, an example of self-giving, sacrificing love.

While Genacross' foundation is in the Lutheran faith, this Core Value is not about church membership or specific

Christian beliefs, but about the way Genacross employees should treat people. Put in another way, it is a call for every person connected to Genacross to use Jesus' teaching as a guide while they do their jobs and relate to all with whom their work brings them into contact – residents, their families, co-workers, and volunteers, alike.

Some individuals may remember the bracelets bearing the letters, WWJD, which stood for "What would Jesus do?" The phrase was a reminder to act in a manner that would demonstrate the way Jesus welcomed and cared for everyone, regardless of who

they were or what they believed or had done. Another way to state that could be with the words, "Faithfulness to Christ."

"Indeed then, as Genacross Lutheran Services, we are not only an organization made up of individuals who are good at what we do, but a community that works together to 'embrace individuals and families with compassionate care and services throughout life's journey,' just as Jesus did and calls everyone to do," Dr. Dumke explained.



## Genacross signs letter of intent - continued from front page

Genacross does not have the resources to address the needs of our aging campuses and the dramatic changes in skilled nursing care, so we initiated a search for an organization that does."

Genacross conducted an exhaustive, national search, including representatives of Lutheran and non-Lutheran, for-profit and non-profit entities. After extensive analysis, Genacross chose Benedictine as the organization that best supported its mission.

Benedictine is a mission-based non-profit that has provided a full spectrum of health and housing services to aging adults for 35 years. Benedictine owns and manages skilled nursing, assisted living and independent living communities across the Upper Midwest and offers services in such areas as rehabilitation, memory care, home health care, adult day and transitional care.

"Benedictine provided nearly everything that Genacross was seeking," Mr. Marshall said. "We share Christian missions, and our values are in alignment. They will facilitate needed capital investments and operational support at our facilities. Their size and scope will help us grow in a competitive health care environment."

With the signing of the letter of intent, a period of due diligence begins. Both organizations will conduct visits and exchange information. Final approval to proceed with the transaction will be required from the Benedictine and Genacross boards of directors and from the Genacross member congregations. If the transaction is approved, it would likely be completed this year. Following closing, Genacross will be a member organization (or subsidiary) of Benedictine, reporting up through its organizational chart.

## AETNA PRESENTS GRANT CHECK TO GENACROSS

**R**ecognized for their continuing focus on strengthening families, Genacross Lutheran Services and Lutheran Services in America (LSA) have been awarded a grant from Aetna Better Health of Ohio to develop a framework to strengthen families, prevent unnecessary child welfare custody, and improve health equity in 10 targeted Ohio communities.

Members of the Aetna Medicaid team presented a check during the February Genacross Family & Youth Services ministry board meeting. Over the next couple of months, key Family & Youth staff members will be responsible for drafting a framework that will be the first major step in creating what will be the new and scalable Partners in Treatment Preservation Program (PTPP).

"PTPP will build on a successful program that our Family & Youth Services currently offers, the Partners in Treatment weekend program, which provides family preservation and reunification programming along with individual family



*The Aetna Medicaid team presents a check to Genacross President/CEO Rick Marshall and Genacross Family & Youth Services Executive Director Katie Zawisza (left to right beside the oversized check).*

therapy, multi-family group therapy, and community and psychiatric supports and treatment for youth and their families," said Rick Marshall, Genacross President/CEO.

LSA's role in creating the PTPP framework includes identifying evidence-based best practices and outcome measures – pulling from their experience working with a nationwide network of service providers. Genacross is a member of LSA, which will also look at how the program can be scaled and replicated within the state and eventually outside Ohio.

"Our work will help build a prevention program to keep children out of care in the first place," said Katie Zawisza, Executive Director for Family & Youth Services. "By focusing on prevention efforts, including parent education and therapeutic activities, we can make an impact on keeping families together across the state."

"Every dollar possible needs to go for direct care," said Maureen Pero, an executive with Aetna Medicaid. "Through this \$20,000 grant, we acknowledge that it takes time and resources to look ahead and facilitate innovation."

"When you consider that nearly three million Ohioans receive health care coverage through the Ohio Department of Medicaid – and combine this with how over 840,000 people served by Medicaid received behavioral health services last year alone – you see the necessity of developing and expanding initiatives to help lower-income families," Ms. Pero added.

## Napoleon games build teamwork



*The Genacross Lutheran Services-Napoleon Campus leadership team recently enjoyed an afternoon of team building led by Executive Director Jessica Kirkendall. She incorporates these frequently with her team, using ideas and skills she learned while attending the LeadingAge Leadership Academy. The leadership members pictured above are practicing communication, direction and teamwork.*



## COORDINATOR HELPS CLIENT ADJUST TO LIFE'S CHANGES

**H**ousing resident Bonita Sabala has lived in Genacross Lutheran Services' Luther Grove senior apartments in east Toledo for the past five years. Last year, however, she began experiencing some obstacles to living on her own that the service coordinator assigned to Luther Grove started to recognize.

Ms. Sabala, who is 73 years old, has been experiencing a decline in her cognitive health, an increased number of falls, and loneliness. One or more of these factors often led to hospitalizations or her calling 911. While she has a positive attitude, she has very little family support, with only one family member living nearby.

**"We are so thankful that we can keep Bonita within our Genacross family, and it has made the transition easier for her."**

Lauren Holub

Senior Level Service Coordinator Lauren Holub spoke with Ms. Sabala several times and expressed that she was concerned for the resident's overall well-being and safety. After many discussions, they agreed that it would be in her best interest to look into assisted living, because she needed more care and socialization in her daily life.

Ms. Sabala had an assessment performed by the local Area Office on Aging to determine the level of care she needed and to see if she qualified to have Medicaid pay for assisted living services. The service coordinator worked diligently with her throughout the entire process of finding a new home.

"As her service coordinator, I talked to her about assisted living and indicated that she will basically do everything that she can for herself, but will have assistance 24 hours a day if she needs it," Ms. Holub said. "She will still have her own apartment and the level of independence she wants and deserves."

In the end, Ms. Sabala selected to stay within the Genacross family of services, intending to move into an assisted living apartment on the Genacross Lutheran Services-Toledo Campus across the street from Luther Grove. However, when the time came to move in early January, she was not ready, expressing that everything was moving too fast for her to process.

After another hospitalization sent her to The Labuhn Center on the Toledo Campus for rehabilitation, Ms. Sabala realized she needed to make a permanent change in her living arrangements. The Genacross service coordinator, care professionals from The Labuhn Center and assisted living on the Toledo Campus, and a representative from the Area Office on Aging worked together to

come up with the best care plan.

Soon, Ms. Sabala will be moving into assisted living. It will meet all of her needs and allow her to live a more fulfilled life – with scheduled activities, on-site church services, meals served in a communal dining room, care assistance when she needs it, and many more opportunities for socialization.

"We are so thankful that we can keep

Bonita within our Genacross family, and it has made the transition easier for her," Ms. Holub said. "She is grateful for the help and care coordination she has received."

"Our residents are given to us for a reason, and it is often so we can help them better their situation through God's hands and to show them that God truly does work with us and through us to give them a better outcome in life," Ms. Holub added.



*Housing resident Bonita Sabala is adjusting to changes in her life with the help of Senior Level Service Coordinator Lauren Holub.*

## CEOs seek innovation at summit



*At the end of January, Genacross President/CEO Rick Marshall participated on an interactive panel at the Lutheran Services in America CEO Summit. The panelists discussed important topics for innovating and positioning for the future, including how they are engaging their boards and leadership, and leveraging partnerships to accelerate competitive advantage.*

# CELEBRATING OUR 160<sup>TH</sup> ANNIVERSARY - THE FIRST 50 YEARS

Genacross Lutheran Services is celebrating its 160<sup>th</sup> anniversary in 2020. From 1860 to today, the organization has been growing and changing to meet the needs of society. This Winter issue focuses on some highlights from the first 50 years of service.



## 1860

*August 6* – The Rev. Johannes Doerfler of Salem Lutheran Church and four members of his congregation established the Lutheran Orphans' Home Society. At about the same time, Pastor Doerfler and his wife welcomed two orphaned boys into his home to be raised with their own children.

*August 15* – The founders formed a parent organization called The Society for General Work of Mercy in the Sense of the Evangelical Lutheran Church in North America. The ultimate vision for the Society was to provide a range of services to people in need, including a home for the aged, a home for the handicapped, a hospital and more.

## 1862

*July 7* – The Society dedicated the first orphanage building, a two-story wooden frame structure located near the present day intersection of Seaman and Wheeling streets on the border of east Toledo and Oregon, Ohio. Most of the labor and a great deal of the material were donated in order to make the home a reality.

## 1870

The Rev. Karl Beckel became the second Director of the Lutheran Orphans' Home. He was also the pastor of First St. John Lutheran Church, and he had served as teacher for the orphans and the children of his parish – beginning a long and close relationship between the orphanage and First St. John that would benefit many.



## 1874

Sister Anna Lutz became the first deaconess to serve the Orphans' Home as housemother. The Society had sent Miss Lutz to the Deaconess Motherhouse in Neuendettlsau, Germany, for training. The Lutheran Sisters who followed her played an important role in the loving care provided to the children.

### IN HER WORDS

"The Orphans' Home is only 2 and ½ miles from the center of the city, east of the Maumee River. Currently...there are 49 children. Owned are forty acres of land. The animal situation is comprised of four horses, seven cows, with milk from two going to the large orphans' home and that of three going to the house of the boys, about fifty pigs and about 100 chickens."

"Baking is done twice or three times a week, and each time 39 or 40 loaves of bread are baked. We buy soap three or four times a year. In spring, hard soap is made while at another time soft or white soap is made."

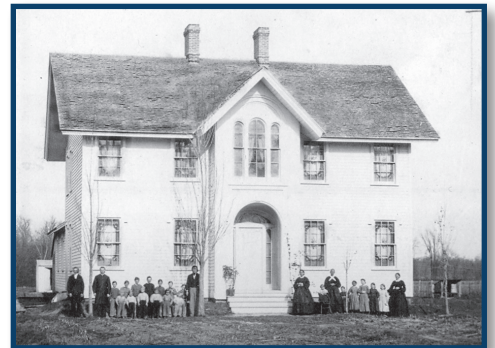
"Mondays are usually wash day. Tuesday, probably ironing and Tuesday afternoon all the ragged clothing must be set aside. Each of the girls must patch three pieces of clothing, likewise also with the mending, and thus everyone helps together."

(Translated excerpts from an 1874 report written in German and sent to Neuendettlsau by Sister Lutz.)

### HISTORICAL PERSPECTIVE

Here are some other events that were going on when the Lutheran Orphans' Home Society was born in 1860.

- Abraham Lincoln was elected the nation's 16th president.
- South Carolina seceded from the Union and set the stage for the Civil War. (The Lutheran Orphans' Home became increasingly needed during the war.)
- The Pony Express began its short-lived operation of transporting mail across the American West.
- Famous Americans Billy the Kid, Juliette Gordon Low, Grandma Moses, and Annie Oakley were also born in 1860.





**1881**

The first of several additions to the orphanage was built at a cost of \$1,500. As the Orphans' Home served more children, space became an ongoing issue. For many years, the housefather and the older orphan boys lived across the street from the orphanage in the farmhouse. Working on the farm was a major part of the older boys' lives.

**1894**

The Rev. Frederick Schmeltz was elected as Director and housefather of the Lutheran Orphans' Home. He served from 1894-1911 and again from 1913-1916. The spirit of the Orphans' Home was very much like a family. In fact, Pastor and Mrs. Schmeltz were so beloved by the children that they came to be referred to as Papa and Mother Schmeltz.

**1899**

The Society passed a resolution at the annual meeting to build a schoolhouse, which was constructed just west of the Orphans' Home.

**1900**

At the turn of the century, the Society was serving 99 children and two elderly in the Orphans' Home. The building was bursting at the seams.

**1904**

At the annual meeting, the idea of building a home for the aged was proposed and accepted. A committee was created to formulate plans. It was determined that the new home would be built next door to the orphanage. Records indicate that a dozen older people lived in the Orphans' Home before the Society built a separate building to care for the elderly.

**1906**

*May 13* – The cornerstone for the new building was laid and construction proceeded at a rapid pace.

*October 21* - The Society dedicated Das Altenheim, known in English as the Home for the Aged or Old Folks' Home. The brick structure included an office, reception room, spacious hall, kitchen, dining room, and 34 bedrooms. The cost to build it was approximately \$16,000.

**1909**

The Society's name was formally changed to the Lutheran Orphans' and Old Folks' Home Society of Toledo, Ohio.

**1910**

The Society celebrated its 50<sup>th</sup> anniversary of service to youth and older adults. Who could have anticipated all the changes that would occur over the next 110 years?



*Like and follow Genacross Lutheran Services on Facebook to see 160 posts about our history.*



## DEDICATED NURSE PRACTITIONER JOINS TOLEDO CAMPUS

**Dawn Lemerand**, RN, MSN, BSN, is a board-certified nurse practitioner who has joined the care team at the Genacross Lutheran Services-Toledo Campus. She started rounding at the campus on February 1 and is in the building Monday through Friday.

In the past, the Toledo Campus has had two part-time rounding nurse practitioners. Mrs. Lemerand's full-time presence will provide continuity of care for both rehabilitation patients and long-term care residents. She rounds on all residents, acute and chronic, and provides preventative health care services. She also coordinates with specialty physicians and other health care providers, as needed.

Mrs. Lemerand, who specializes in family and geriatric medicine, will also be responsible for providing person-centered care and involving families in planning for future care needs. Another goal of having a dedicated nurse practitioner on the Toledo Campus is to reduce hospital re-admissions and negative health outcomes.

"Dawn's presence here has enhanced the quality of life of our long-term and short-term residents," said Executive Director Cathleen Voyles-Baden. "Residents and families have been impressed with her attentiveness to their health concerns. She specifically focuses on quality and process improvements, which benefits our campus greatly."

"The key to success is to focus on goals, not obstacles," Mrs. Lemerand said. She received her bachelor's degree from the University of Texas-Arlington in 2013 and her master's degree from Walden University in 2018. She is employed by The University of Toledo Physicians and works under the guidance of the Toledo Campus Medical Director, Ganesh Merugu, MD.



*Dawn Lemerand*

## Wolf Creek renovations touch on many areas of the campus

**T**he Genacross Lutheran Services-Wolf Creek Campus is in the midst of some exciting updates. Most recently, the campus replaced the flooring in the main therapy gym and updated the Village Store gift shop. Renovations in the assisted living common areas are ongoing, with fresh paint and new flooring already completed in the lobbies and hallways.

Next, the Wolf Creek Campus will add new cabinetry in the therapy gym, and new signage and furniture in the assisted living common areas. In addition, the campus' conference room will be getting a refresh with new flooring in the spring.

"The Village Store helps to provide a greater quality of life and independence for our residents, and it was sorely missed during the two weeks it was closed for renovations," said Emily Sweeney, Assistant Executive Director.

The Village Store re-opened at the end of January. It still provides toiletry items and snacks for residents and visitors, as well as some gift items and cards. New additions to the Village Store include a popcorn machine, coffee, and the long-anticipated return of freshly baked cookies.

The Wolf Creek Campus provides physical, occupational, and speech therapies, on both an inpatient and outpatient basis,

in the therapy gym. The new flooring and upcoming cabinet installations will give the gym a fresh look and feel.

"With these updates, we can provide a more pleasing environment for our residents and patients to do their therapy," explained Allison Malone, acting Director of Rehabilitation. "The new hard floor is better for infection control and is more efficient when moving patients around."

"We are so grateful for the patience of our residents and patients during the updates," Ms. Sweeney stated. "We are very excited about the finished updates and look forward to all of the upcoming ones that should be completed by this summer."



*Shirley Ridenour, who has volunteered for 20 years, likes the new additions to the Village Store.*

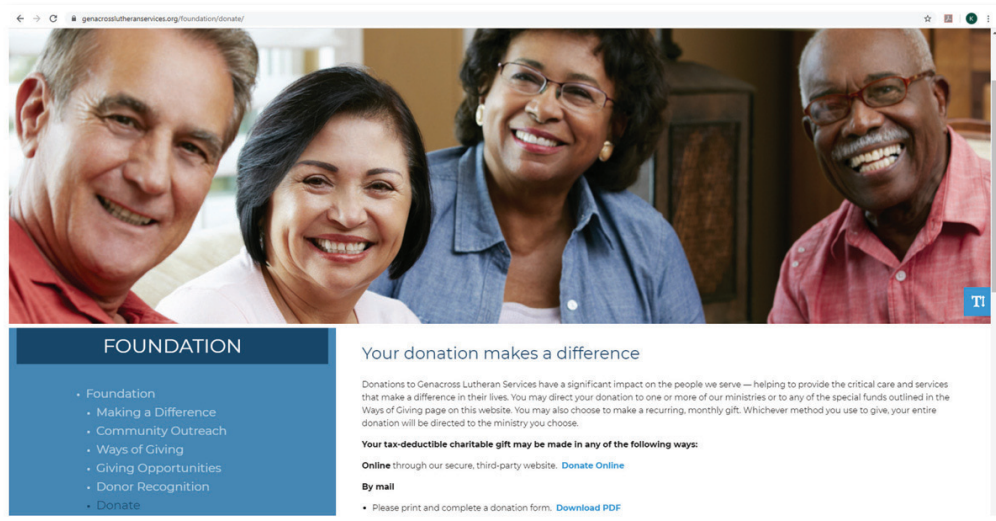


# ONLINE OPTION MAKES DONATING CONVENIENT

In 2018, \$10 of every \$1,000 donated to Genacross Lutheran Services was given through the Genacross website. While it was a small percentage of the total donations, it was an increase from 2017. Likewise, in 2019, the increase continued. For every \$1,000 donated, \$20 was given online. Although not a sizable increase, it does indicate a continued growth in the use of online giving by donors.

Individuals can go to the Donate page on the Genacross website and make a single donation at any time, but many of our online donors have chosen to contribute on a monthly basis. This is a way for donors to contribute a sizable amount through smaller monthly payments. Monthly giving provides for an easy way to budget contributions to Genacross.

Any size donation to Genacross makes a real difference. For an amount of \$35, an individual can help with an hour of tutoring for a child in the Family & Youth program. A \$50 donation could assist a nursing care or assisted living resident in buying needed personal products and services, while \$70 will help in covering a portion of the care necessary for a nursing care resident.



*The Genacross Lutheran Services Foundation Donate page has links to an online giving service as well as a printable form. To donate or obtain information on other giving options, go to [www.GenacrossLutheranServices.org/Foundation](http://www.GenacrossLutheranServices.org/Foundation).*

As always, the Genacross Lutheran Services Foundation will honor the wishes of contributors who designate donations to specific ministries or programs. In addition, 100% of each donor's gift will be directed to the selected ministry or program.

Please consider monthly giving. For those who do choose to donate online, we would like to receive feedback on your donation experience. Is it easy to donate through the website? Does the web page provide a reason to donate? Would you be likely to reuse this giving method? Please send responses to [ABiel@Genacross.org](mailto:ABiel@Genacross.org). Thank you for your time and for your generosity.

## IN MEMORY OF Oct. 1 - Dec. 31, 2019

**George & Gladys Ardner** by Carol Ardner, Georgia Ardner

**Dean Asmus** by Jim & Judy Hill

**Husband Donald F. Avers** by Ruth Avers

**Norm Avers** by Doris Avers

**Sigmund Bauer** by Freda Lang

**John & Amelia Beins** by Michael & Sandra Lininger

**Kenneth & Louise Beins** by Michael & Sandra Lininger

**My husband, Carl Bensch**, by Phyllis Bensch

**Mr. & Mrs. Donald (JoAnn) V. Boyd** by Joette Boyd-Randall

**Susan, Michael & Megan Brown** by Mary Schimming

**Ruby Butscher** by Sandra Vance

**Richard & Daisy Carter** by Leora & Rich Stainbrook

**Vicky Chambers** by Don & Karen Holmes, Kathleen B. Lemmerbrock, Plante & Moran, PLLC, New York, NY

**Dorothy Clark** by Paul Clark Sr.

**Mary Anne Clough** by Anonymous, Cheryl & Darrel

Baker, Marvin & Linda Barlow, Christian Church Disciples, Fayette, Cheryl & Gary Daman, Dick & Nedra Frederick, James & Deborah James, Jerry & Lori Langenhop, Jon & Alice Leatherman, Arlene Lipp, Bruce & Lois McCormick, Ruth E. Smith, Rose & Leon St. Clair, The Lutheran Church - Missouri Synod, Thomas & Debra Zimmerman

**Peggy Collins** by Mary Billow

**Russell Cook** by Bob & Linda Knight

**My husband, Walden "Bud" Damschroder**, by Mrs. Mary A. Damschroder

**Richard Deacon** by Sandra Vance

**Deceased parents & siblings** by Roland & Marilyn Henderson

**Departed Loved Ones** by Myra Zaenger

## IN MEMORY OF - continued

**Clarence & Edna Dierksheide** by Harry & Rose Mary Schroeder

**Paul & Lois Dierksheide** by Diane Bostdorff

**Herbert & Julia Doerfler** by Miriam & Ted Benner

**Rolland Fickel** by Donna Fickel

**Celia & Jim Findlay** by Dave & Pam Roberts

**Rosemarie Fisher** by Ken Fisher

**Pat Florio** by Bernadine Florio

**Vincent Gangle** by Sandra Vance

**Norma Jean Gast** by Mr. Terry L. Gast

**Leland & Gertrude Gill** by Barbara Velarde

**Vince, Verna & Roger Haas** by Bill & Barb Hundt

**Geri Haase** by Cheryl & Gary Daman

**Fred & Dorothy Hagen** by DeAnna McCashin

**Lillian Henning** by Carol Ardner

**Ann Hill** by Jim & Judy Hill

**Doris Hoesman, my wife**, by Kermit Hoesman

**Lois Hurrell** by Sandra Vance

**My mother, Tedia Jarocki**, by Joyce Douglas

**Leslie Johnson** by Sue Ponsford, Harry & Rose Mary Schroeder, Nancy A. Taylor

**My parents, Julius & Emma Kahrs**, by Lillian Keller

**Clarisa & Al Knap** by Doris Avers

**Charles & Lucile Knight** by Bob & Linda Knight

**Rev. Gerald Labuhn & Mrs. Ilean Labuhn** by Harry & Karen Blackmon

**Ilean Labuhn** by Esther Bell, Hazel Deuble, Karen Harris, Bruce & Katie Haywood, Cindy & David Herrera, Tony & Karen Herrera, Hess & VanScoy Families, John Jenkins, Mr. Misael & Mrs. Roseanne Martinez, Maumee High School, Roy & Rita Riegle, Dave & Pam Roberts, Jim & Janet Routson, Scott & Lori Saunders, Dagmar Varela, Toledo Area Street Rods

**Maxine LaFontaine** by Rev. Lori Strang

**Son, Christopher Kent Libke**, by Sharon Libke

**Brothers Richard, Arlyn & James Lipstraw**, by Andrew & Helen Nowak

**Loved ones** by Doris Forry, Mr. Melvin Schumann

**My husband, Pete Macko**, by Darlene Macko

**Edith Marti** by Bob Marti

**Carol Meek** by Bev Apel, Anne Biel

**Ed & Anna Miller** by Esther Speck

**Judith Miller** by St. Paul WELCA, Clyde

**Alma Mueller** by Lynn & Joyce Olman

**My wife, Mary**, by Weldon Mueller

**Our parents** by Ruthann & David House, Dr. & Mrs. Ernest Spohn

**Parents, Oscar & Anna Stainbrook**, by Leora & Rich Stainbrook

**Rosalie Pawlicki** by Jean Winkelman

**Sue Pearson** by Kimberly Bordenkircher

**James Richason Jr.** by Barbara Bamm

**James & Evelyn Richason Sr.** by Barbara Bamm

**Don Rodenhauser** by Sandra Vance

**Bernice & Gib Runner** by Bob & Linda Knight

**Clyde Sandrock** by Mary Schimming

**Milton Schimming** by Mary Schimming

**Fred & Mary Schroeder** by Harry & Rose Mary Schroeder

**Marjorie Schulte** by Kathleen B. Lemmerbrock

**The Schwarzes** by Friedel & Ursula Helms

**James F. Sommers Sr.** by Kevin & Carol Abbey, Anne Biel, Kathleen B. Lemmerbrock, Rick & Jackie Metz, Louise Sommers

**Wayne Speck** by Esther Speck

**Pastor R.F. Staber** by Lois Staber

**Rose Thomson** by Kathleen B. Lemmerbrock

**Mary Kate Thornton** by Suzanne Church

**Harry & Laura Warnke** by Michael & Sandra Lininger

**Otto & Marie Warnke** by Jean DeWitt

**Richard & Ruth Warnke** by Michael & Sandra Lininger

**John & Hazel Warrington** by Steve & Kathy Warrington

**Rev. Thomas Wilson** by Mrs. Frances Wilson

**Bill Wise** by Sandra Vance

## CONGREGATIONAL DONATIONS

Oct. 1 - Dec. 31, 2019

St. Martin, Archbold  
Good Hope, Arlington  
St. Paul, Blissfield, MI  
Christ, Bowling Green  
Trinity, Bryan  
Bethlehem, Defiance  
St. Mark, Defiance  
St. Paul, Defiance  
St. John WELCA, Deshler  
Grace, Elmore  
Hope, Fostoria  
Grace Church Women, Fremont  
St. Mark, Fremont  
Zion Women of the ELCA, Gibsonburg  
Hope, Hamler  
St. Paul WELCA - Danbury, Lakeside  
Marblehead

First, Leipsic  
St. Matthew, Lima  
Salem Grace United, Luckey  
St. Peter Church Women, Martin  
St. Paul, Mc Clure  
St. John, New Washington  
St. Peter, Norwalk  
St. John, Oak Harbor  
St. Michael, Ottawa Lake, MI  
Bethlehem, Pemberville  
Church of the Master, Perrysburg  
Zion, Perrysburg  
Zoar, Perrysburg  
St. Peter's, Saint Clair, MI

St. John's, Stony Ridge  
St. Paul, Sulphur Springs  
Olivet, Sylvania  
Bethlehem Sunday School, Toledo  
First St. John Church Women, Toledo  
First St. John, Toledo  
Messiah, Toledo  
St. Paul's Women, Toledo  
Zion Women, Valley City  
Trinity, Wauseon  
Community of Christ, Whitehouse  
Solomon, Woodville



## INDIVIDUAL DONATIONS

Oct. 1 - Dec. 31, 2019

Anonymous	Tamara Dawson-
Beverly Apel	Kynard
Rev. Dr. & Mrs.	Carl & Barbara
Gerald Bauer	Dierksheide
James Beardsley	Fred Doering
Robert Beery	Joyce Douglas
John & Julia Bergman	Alan & Mary Ann
Jason Beyer	Draves
Patricia Blankenship	Dr. Jim & Dawn
Hilde Boes	Dumke
Stephen & Deborah	Cindy Dunne
Bowsher	Rev. John & Mrs.
Lee & Natalie	Sherry Ferne
Bredbeck	Bruce Flory
Kari Bucher	Marlene Ford
Ruby Burkey	Ken & Arlene Freytag
Christina Burnette	Ron & Mary Lou
Rev. Charles & Mrs.	Gabel
Jeri Campbell	Glenn Geldien
Elizabeth Cannon	Don & Donna
Nancy Churchill	Genzman
Angela Clay	George Gibson
Diane Cline	Cheri Goertz
Bill & Carol Cook	Jack & Gretchen
James Cordy	Grigsby
Molly & James Cress	Bernadine Guyer
	Robert Haaf

Victoria &  
Demetrius Harris  
Sue Hoellrich  
Paul A. Hotmer  
Athole G. Hubbard  
Dave & Vicki Huber  
Pastor Keith & Sue  
Hunsinger  
Eric & Cindy Johnson  
Mr. Leslie Johnson  
Jim & Joan Keeler  
Jim & Sandy Kersten  
Bob & Linda Knight  
Dawn Knisel  
John & Mary Kramp  
Dan & Julie Kunos  
Dr. Sandra Laas  
Kathleen B.  
Lemmerbrock  
Burt & Mary Ann  
Luring  
Rev. & Mrs. Steve Lutz  
Beverly Mackey  
Rick & Janet Marshall  
Ed & Nancy Mauntler  
Vince & Laurie Mauro  
Carol L. Meuser  
Patty Michaelis

Blair & Anita Miller  
Mrs. Thomas Moon  
Melanie Moore  
Mary & Al Mortemore  
Weldon Mueller  
Paul Nelson  
Robert & Marie  
Obrock  
Lee & Jan Odegaard  
Jim Petty  
Rev. Dr. Tim & Mrs.  
Kate Philabaum  
Diane Pojedynski  
David & Linda Polzin  
Jeff & Sharon  
Przysiecki  
Lester & Arlene  
Ramler  
Rev. Richard &  
Suzanne Rentner  
Ray & Judy  
Robaszkiewicz  
Dave & Pam Roberts  
Jon Russell  
Mary Satterfield  
Rev. & Mrs. Dale  
Schaefer  
Jeff & Lorinda Schalk

Karen Schepman  
Amanda Schroeder  
Jeff & Paige Schulte  
Tim & Kimberly  
Schumm  
Sharon Schwanke  
Robert Shank  
Jane Sharp  
Duane Shively  
Joan Slebos  
Scott Slee  
William E. Smith  
Louise Sommers  
William & Penny  
Spanfellner  
Robert & Janis Stein  
Helen Sterling  
Meg & Dennis Stieber  
Mr. & Mrs. David  
Stough  
Jim & Marcia Talbert  
Carol Taylor  
Sandra Vance  
Lynn & John Warren  
Linda Weaver  
Bill Welling  
Lee & Paula Wunschel  
Katie & Jay Zawisza

## ORGANIZATIONAL DONATIONS

Oct. 1 - Dec. 31, 2019

AmazonSmile Foundation, Seattle, WA  
Hudson Community Foundation  
Jackson Lewis P.C., Cleveland  
Kroger Community Rewards, Columbus  
Ohio Genealogical Society -  
Lucas County Chapter, Toledo  
Stapleton Insurance Group, Sylvania  
TOPS #1648, Temperance, MI

## NON-CASH

Oct. 1 - Dec. 31, 2019

Harry & Karen  
Blackmon  
Marilyn Mach  
Lois Manion  
Melanie Moore  
Sharon Parmelee

## IN HONOR OF

Oct. 1 - Dec. 31, 2019

**Mary Atkins, for all her help!**,  
by Ruth Marquardt

**Sally Babcock** by Her Family

**Parents, Virginia & Kenneth J. Favro**,  
by Sharon Libke

**Walt & Becky Hardy's 50th wedding anniversary** by Mark & Janice Crock

**The Holy Spirit, who is an integral part of the Trinity**, by John Weislmeier

**The birth of McKenna McIntyer** by  
Nancy Hardin

**My loved ones** by Jean Oberkiser

**Don Shelangoskie** by Anonymous

**If we have failed to list your name or have listed it incorrectly, please accept our apologies and contact Anne at 419.861.4965 to correct our records.**

## Nondiscrimination and Accessibility Requirements Notice

Genacross Lutheran Services complies with applicable Federal civil rights laws and does not discriminate on the basis of race, color, national origin, age, disability, or sex.

**English:** ATTENTION: If you speak [insert language], language assistance services, free of charge, are available to you. Call 1-888-546-7745 (TTY: 1-888-546-7745).

**Spanish:** ATENCIÓN: si habla español, tiene a su disposición servicios gratuitos de asistencia lingüística. Llame al 1-888-546-7745 (TTY: 1-888-546-7745).

**Chinese:** 注意: 如果您使用繁體中文, 您可以免費獲得語言援助服務。請致電 1-888-546-7745 (TTY: 1-888-546-7745)

# THE FRIEND

is published quarterly by  
Genacross Lutheran Services

Kari Bucher, Editor  
Bev Apel, Graphics

Please send  
address changes to:

**The FRIEND**

2021 N. McCord Rd.  
Toledo, OH 43615-3030  
P: 419.861.4990

Some names and photos  
in The FRIEND  
are representational.

Printed by  
Homewood Press.



2021 N. McCord Road  
Toledo, OH 43615-3030  
GenacrossLutheranServices.org



Non-Profit Org.  
U.S. Postage

**PAID**

Toledo, Ohio  
Permit No. 387

## 160th Annual Meeting of Member Congregations

## EVENT CELEBRATES PAST, PRESENT AND FUTURE OF MINISTRY

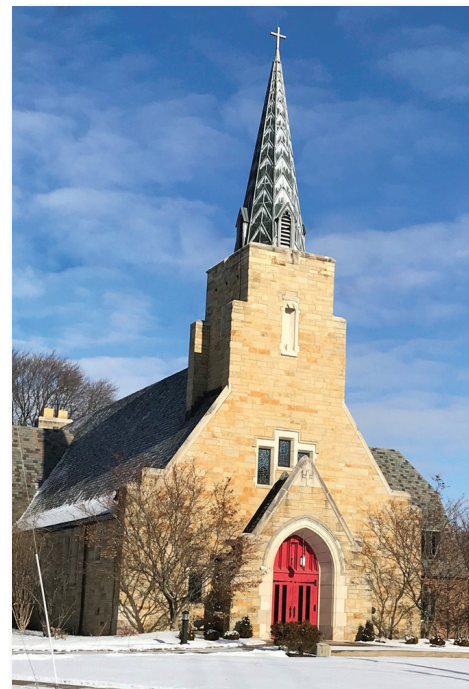
Genacross Lutheran Services will hold its 160<sup>th</sup> Annual Meeting of Member Congregations on Thursday, April 2, 2020, at Hope Lutheran Church in Toledo, Ohio.

The evening will begin at 5:30 p.m. with hearty hors d'oeuvres and fellowship in Hope's Larson Hall. Attendees are invited to dine, mingle, and visit the ministry displays. A brief worship service and the annual meeting will follow at 6:30 p.m. in the sanctuary.

This year's annual meeting will include a retrospective look at the roots of the organization and highlights from its 160 years of serving individuals in need. President/CEO Rick Marshall will also present his annual report on current Genacross operations.

During the business portion of the meeting, the future of Genacross will be the focus. Delegates from member congregations will vote on a resolution authorizing Genacross to join Benedictine, a nationally recognized senior care ministry based in Minnesota.

To make a reservation, call Bev at 419-861-4954 or email [BApel@Genacross.org](mailto:BApel@Genacross.org). Reservations should be received by Thursday, March 26, 2020.



*Hope Lutheran Church in Toledo will host the 2020 Annual Meeting of Member Congregations.*



Connect with **Genacross Lutheran Services** on social media. We are now on Facebook and LinkedIn, providing new ways you can learn about, share, and comment on the latest Genacross news and events.